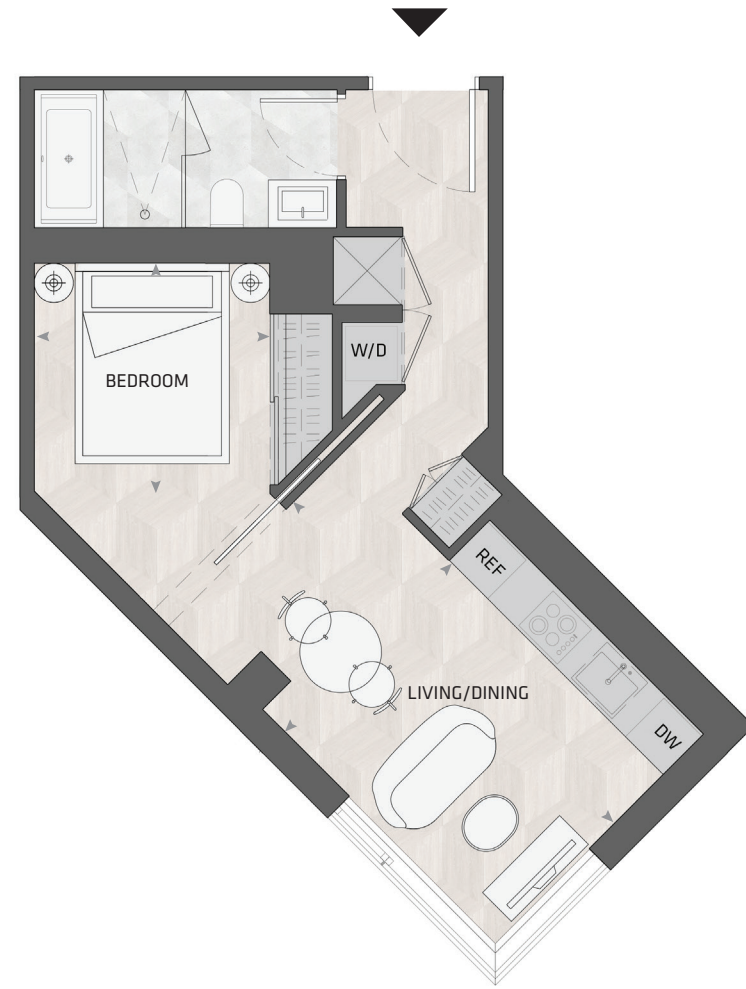


KING

HOME SOS E



1BD.76A

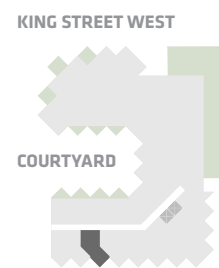
1 Bedroom
1 Bathroom

Total Living:
484 ft²

Interior Living:
484 ft²

Exterior Living:
N/A

**LIVING/
DINING** 8' 6" X 16' 5"
BEDROOM 8' 6" X 7' 7"



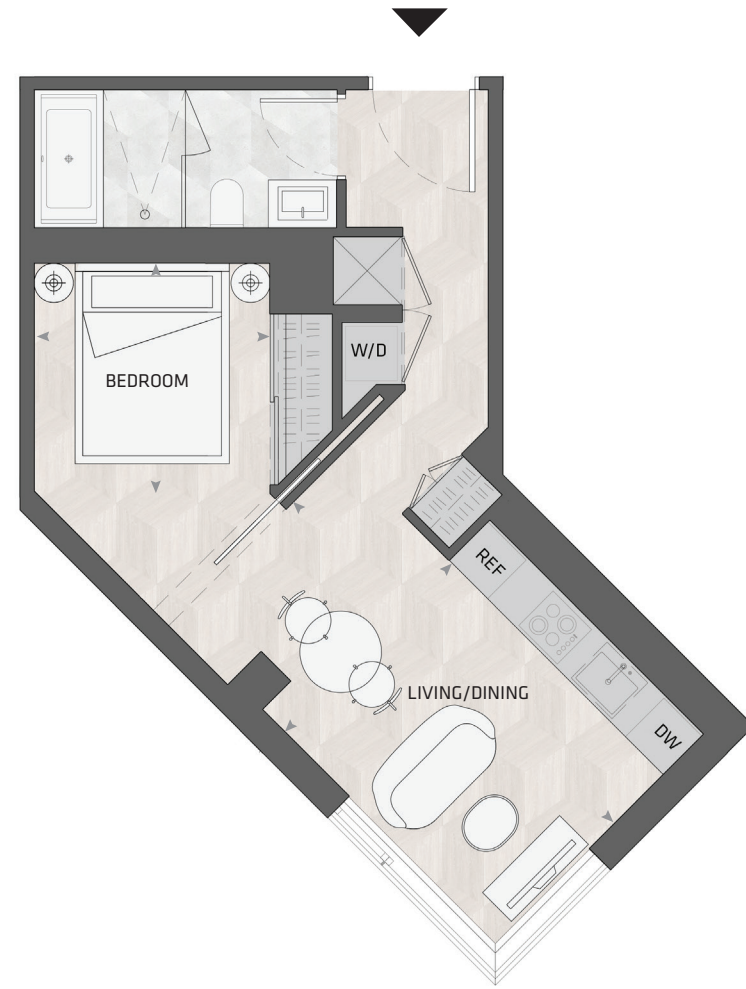
EAST MOUNTAIN KEYPLAN



All dimensions and specifications are approximate. Certain plans are reverse or mirror image. Balcony square footages are estimated and may vary from that stated. Please see Sales Representative for details. Furniture not included. Refer to key plan for unit location and orientation. E. & O.E.

KING

HOME 506 E



1BD.76A

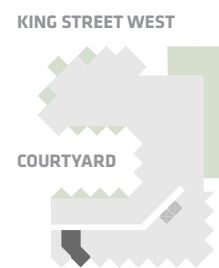
1 Bedroom
1 Bathroom

Total Living:
492 ft²

Interior Living:
492 ft²

Exterior Living:
N/A

**LIVING/
DINING** 8' 6" X 16' 5"
BEDROOM 8' 6" X 7' 7"



EAST MOUNTAIN KEYPLAN



All dimensions and specifications are approximate. Certain plans are reverse or mirror image. Balcony square footages are estimated and may vary from that stated. Please see Sales Representative for details. Furniture not included. Refer to key plan for unit location and orientation. E. & O.E.

KING

HOME S10 E



1BD.32

1 Bedroom
1 Bathroom

Total Living:
523 ft²

Interior Living:
523 ft²

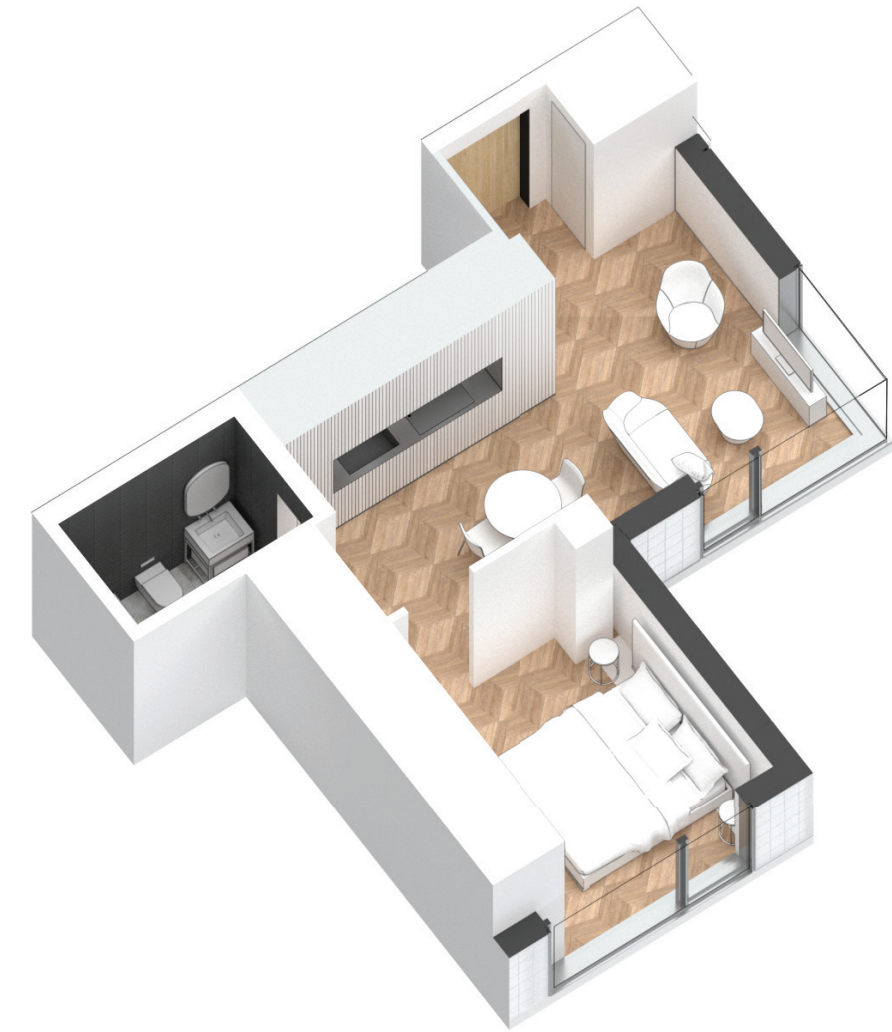
Exterior Living:
N/A

LIVING	9' 0" X 12' 0"
DINING	12' 7" X 7' 9"
BEDROOM	8' 11" X 10' 4"

KING STREET WEST

COURTYARD

EAST MOUNTAIN KEYPLAN



All dimensions and specifications are approximate. Certain plans are reverse or mirror image. Balcony square footages are estimated and may vary from that stated. Please see Sales Representative for details. Furniture not included. Refer to key plan for unit location and orientation. E. & O.E.

KING

HOME 606 E



1BD.76A

1 Bedroom
1 Bathroom

Total Living:
493 ft²

Interior Living:
493 ft²

Exterior Living:
N/A

**LIVING/
DINING** 8' 6" X 16' 5"
BEDROOM 8' 6" X 7' 7"

KING STREET WEST

COURTYARD

EAST MOUNTAIN KEYPLAN



All dimensions and specifications are approximate. Certain plans are reverse or mirror image. Balcony square footages are estimated and may vary from that stated. Please see Sales Representative for details. Furniture not included. Refer to key plan for unit location and orientation. E. 6 O.E.

KING

HOME 609 E



1BD.78

1 Bedroom
1 Bathroom

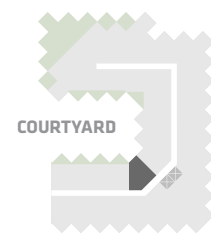
Total Living:
495 ft²

Interior Living:
495 ft²

Exterior Living:
N/A

LIVING	8' 2" X 13' 0"
DINING	7' 6" X 8' 7"
BEDROOM	9' 1" X 8' 8"

KING STREET WEST



COURTYARD

EAST MOUNTAIN KEYPLAN



All dimensions and specifications are approximate. Certain plans are reverse or mirror image. Balcony square footages are estimated and may vary from that stated. Please see Sales Representative for details. Furniture not included. Refer to key plan for unit location and orientation. E. & O.E.

KING

HOME 610 E



1BD.84

1 Bedroom
1 Bathroom

Total Living:
503 ft²

Interior Living:
503 ft²

Exterior Living:
N/A

**LIVING/
DINING** 13' 4" X 8' 8"
BEDROOM 8' 6" X 8' 8"

KING STREET WEST

COURTYARD

EAST MOUNTAIN KEYPLAN



All dimensions and specifications are approximate. Certain plans are reverse or mirror image. Balcony square footages are estimated and may vary from that stated. Please see Sales Representative for details. Furniture not included. Refer to key plan for unit location and orientation. E. & O.E.

KING

HOME 615 E



1BD.14

1 Bedroom
1 Bathroom

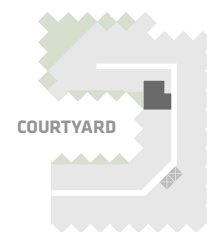
Total Living:
653 ft²

Interior Living:
578 ft²

Exterior Living:
75 ft²

LIVING	12' 0" X 9' 2"
DINING	8' 0" X 9' 0"
BEDROOM	12' 2" X 9' 10"
BALCONY	13' 0" X 7' 9"

KING STREET WEST



EAST MOUNTAIN KEYPLAN



All dimensions and specifications are approximate. Certain plans are reverse or mirror image. Balcony square footages are estimated and may vary from that stated. Please see Sales Representative for details. Furniture not included. Refer to key plan for unit location and orientation. E. & O.E.

KING

HOME 618 E



1BD.33

1 Bedroom
1 Bathroom

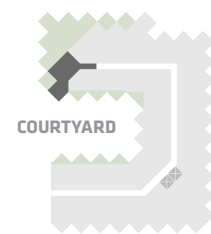
Total Living:
995 ft²

Interior Living:
696 ft²

Exterior Living:
299 ft²

LIVING	10' 7" X 13' 2"
DINING	10' 7" X 7' 7"
BEDROOM	11' 9" X 10' 4"
TERRACE A	6' 8" X 8' 3"
TERRACE B	9' 1" X 9' 1"

KING STREET WEST



COURTYARD

EAST MOUNTAIN KEYPLAN



All dimensions and specifications are approximate. Certain plans are reverse or mirror image. Balcony square footages are estimated and may vary from that stated. Please see Sales Representative for details. Furniture not included. Refer to key plan for unit location and orientation. E. & O.E.

KING

HOME 620 E



1BD.83

1 Bedroom
1 Bathroom

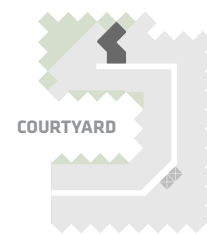
Total Living:
710 ft²

Interior Living:
567 ft²

Exterior Living:
143 ft²

LIVING	11' 0" X 12' 2"
DINING	8' 5" X 9' 5"
BEDROOM	9' 11" X 8' 6"
TERRACE	9' 1" X 6' 8"

KING STREET WEST



COURTYARD

EAST MOUNTAIN KEYPLAN



All dimensions and specifications are approximate. Certain plans are reverse or mirror image. Balcony square footages are estimated and may vary from that stated. Please see Sales Representative for details. Furniture not included. Refer to key plan for unit location and orientation. E. & O.E.

KING

HOME 622 E



1BD.10C

1 Bedroom
1 Bathroom

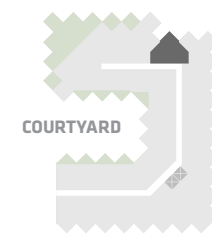
Total Living:
659 ft²

Interior Living:
587 ft²

Exterior Living:
72 ft²

LIVING	11' 7" X 8' 10"
DINING	8' 6" X 7' 10"
BEDROOM	9' 10" X 11' 9"
BALCONY	11' 0" X 4' 11"

KING STREET WEST



EAST MOUNTAIN KEYPLAN



All dimensions and specifications are approximate. Certain plans are reverse or mirror image. Balcony square footages are estimated and may vary from that stated. Please see Sales Representative for details. Furniture not included. Refer to key plan for unit location and orientation. E. 6 O.E.

KING

HOME 626 E



1BD.34

**1 Bedroom
1 Bathroom**

**Total Living:
563 ft²**

Interior Living:
491 ft²

Exterior Living:
72 ft²

LIVING	10' 11" X 8' 6"
DINING	7' 2" X 7' 9"
BEDROOM	9' 10" X 8' 10"
BALCONY	4' 11" X 11' 0"

KING STREET WEST

COURTYARD

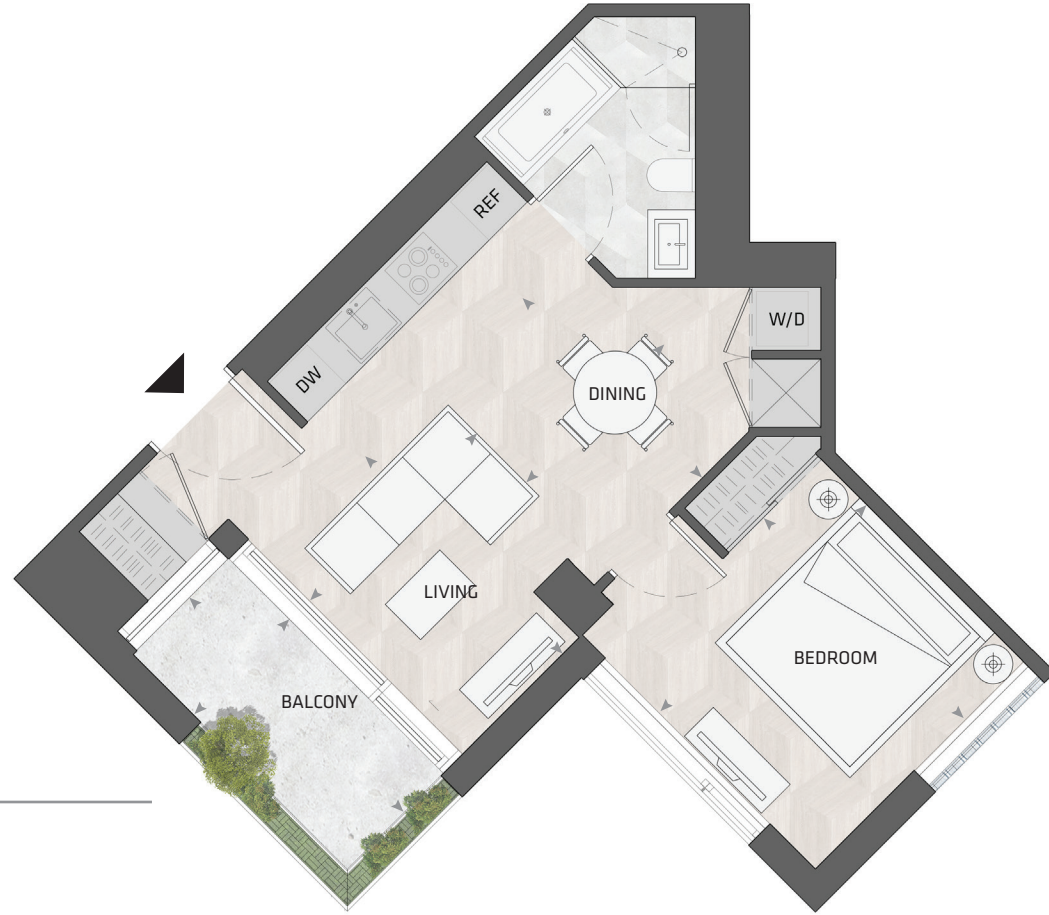
EAST MOUNTAIN KEYPLAN



All dimensions and specifications are approximate. Certain plans are reverse or mirror image. Balcony square footages are estimated and may vary from that stated. Please see Sales Representative for details. Furniture not included. Refer to key plan for unit location and orientation. E. & O.E.

KING

HOME 627 E



1BD.35

1 Bedroom
1 Bathroom

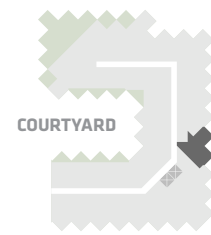
Total Living:
631 ft²

Interior Living:
559ft²

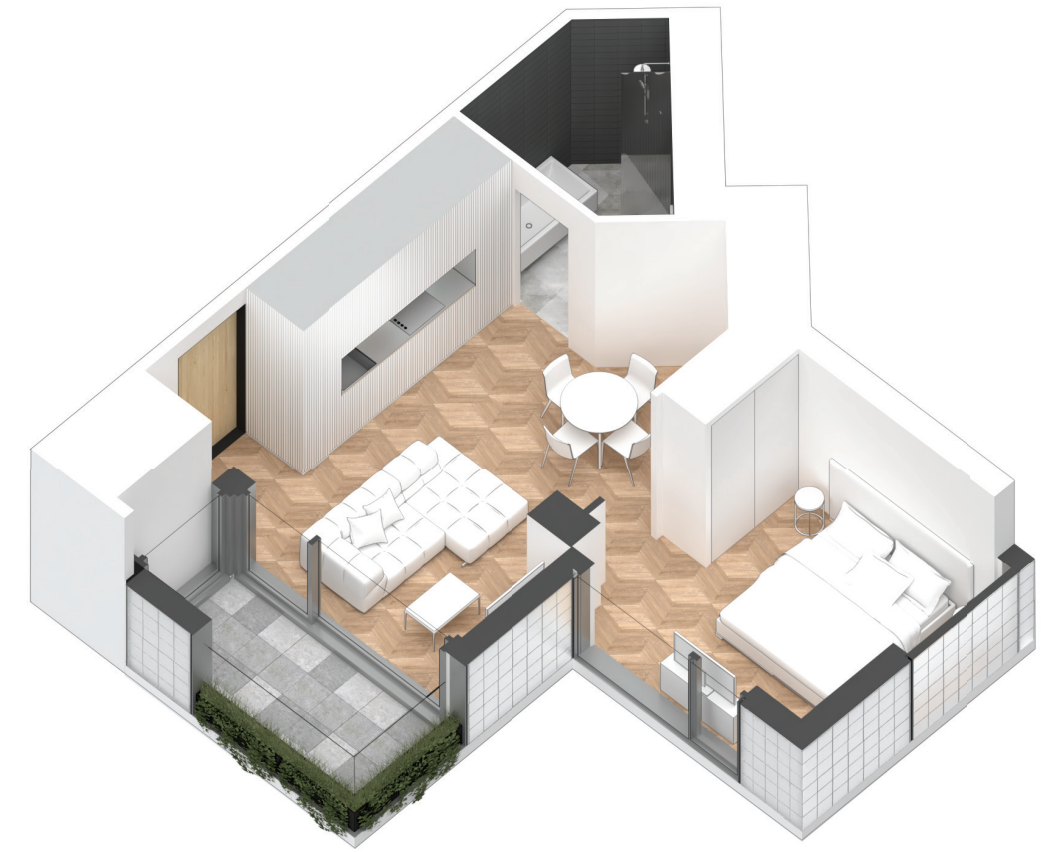
Exterior Living:
72 ft²

LIVING	8' 6" X 9' 4"
DINING	7' 2" X 8' 4"
BEDROOM	10' 7" X 10' 4"
BALCONY	4' 11" X 11' 0"

KING STREET WEST



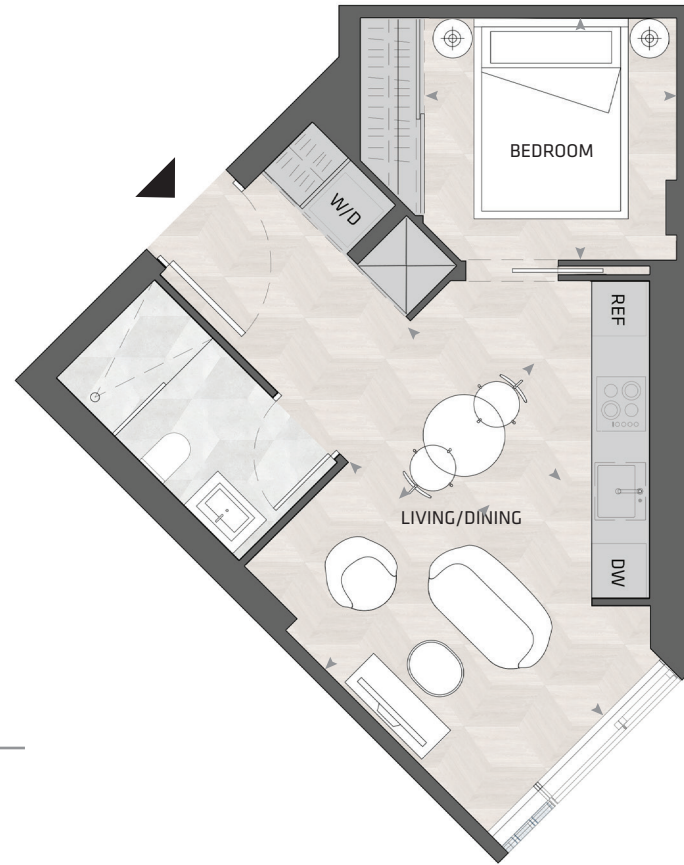
EAST MOUNTAIN KEYPLAN



All dimensions and specifications are approximate. Certain plans are reverse or mirror image. Balcony square footages are estimated and may vary from that stated. Please see Sales Representative for details. Furniture not included. Refer to key plan for unit location and orientation. E. & O.E.

KING

HOME 708 E



1BD.78

1 Bedroom
1 Bathroom

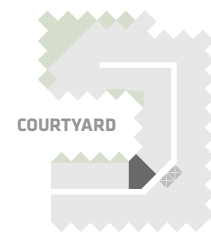
Total Living:
495 ft²

Interior Living:
495 ft²

Exterior Living:
N/A

LIVING	8' 2" X 13' 0"
DINING	7' 6" X 8' 7"
BEDROOM	9' 1" X 8' 8"

KING STREET WEST



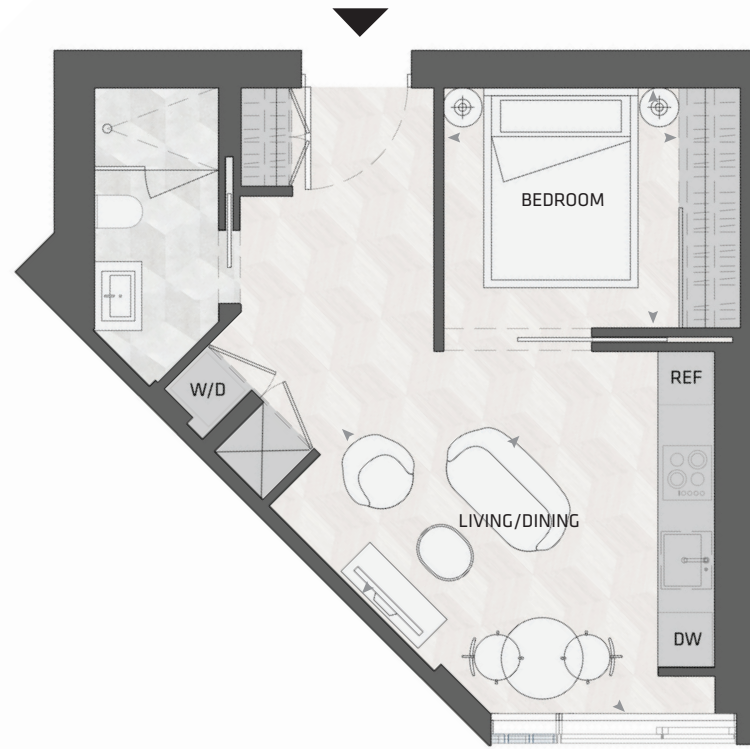
EAST MOUNTAIN KEYPLAN



All dimensions and specifications are approximate. Certain plans are reverse or mirror image. Balcony square footages are estimated and may vary from that stated. Please see Sales Representative for details. Furniture not included. Refer to key plan for unit location and orientation. E. & O.E.

KING

HOME 709 E



1BD.84

1 Bedroom
1 Bathroom

Total Living:
503 ft²

Interior Living:
503 ft²

Exterior Living:
N/A

**LIVING/
DINING** 13' 4" X 8' 8"
BEDROOM 8' 6" X 8' 8"

KING STREET WEST

COURTYARD

EAST MOUNTAIN KEYPLAN



All dimensions and specifications are approximate. Certain plans are reverse or mirror image. Balcony square footages are estimated and may vary from that stated. Please see Sales Representative for details. Furniture not included. Refer to key plan for unit location and orientation. E. & O.E.

KING

HOME 712 E



1BD.14

1 Bedroom
1 Bathroom

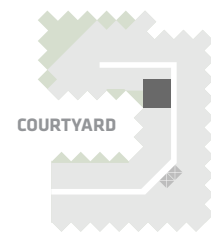
Total Living:
634 ft²

Interior Living:
559 ft²

Exterior Living:
75 ft²

LIVING	12' 0" X 9' 2"
DINING	8' 0" X 9' 0"
BEDROOM	12' 2" X 9' 10"
BALCONY	13' 0" X 7' 9"

KING STREET WEST



COURTYARD

EAST MOUNTAIN KEYPLAN



All dimensions and specifications are approximate. Certain plans are reverse or mirror image. Balcony square footages are estimated and may vary from that stated. Please see Sales Representative for details. Furniture not included. Refer to key plan for unit location and orientation. E. & O.E.

KING

HOME 720 E



1BD.10C

**1 Bedroom
1 Bathroom**

**Total Living:
650 ft²**

Interior Living:
578ft²

Exterior Living:
72 ft²

LIVING	11' 7" X 8' 10"
DINING	8' 6" X 7' 10"
BEDROOM	9' 10" X 11' 9"
BALCONY	11' 0" X 4' 11"

KING STREET WEST

COURTYARD

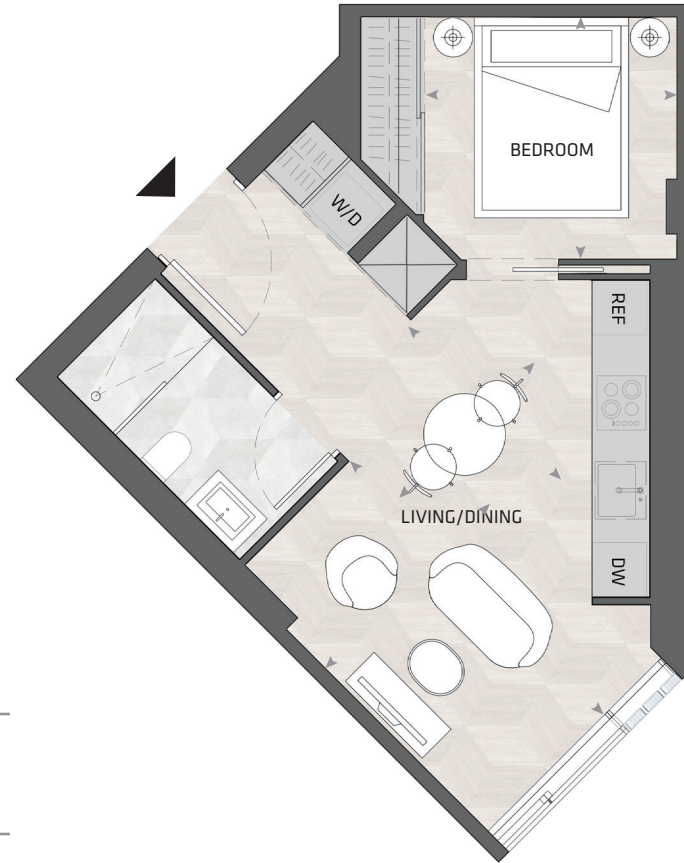
EAST MOUNTAIN KEYPLAN



All dimensions and specifications are approximate. Certain plans are reverse or mirror image. Balcony square footages are estimated and may vary from that stated. Please see Sales Representative for details. Furniture not included. Refer to key plan for unit location and orientation. E. 6 O.E.

KING

HOME 808 E



1BD.78

1 Bedroom
1 Bathroom

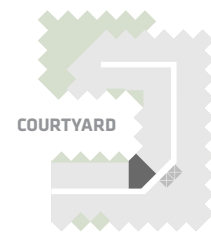
Total Living:
495 ft²

Interior Living:
495 ft²

Exterior Living:
N/A

LIVING	8' 2" X 13' 0"
DINING	7' 6" X 8' 7"
BEDROOM	9' 1" X 8' 8"

KING STREET WEST



COURTYARD

EAST MOUNTAIN KEYPLAN



All dimensions and specifications are approximate. Certain plans are reverse or mirror image. Balcony square footages are estimated and may vary from that stated. Please see Sales Representative for details. Furniture not included. Refer to key plan for unit location and orientation. E. & O.E.

KING

HOME 809 E



1BD.84

1 Bedroom
1 Bathroom

Total Living:
503 ft²

Interior Living:
503 ft²

Exterior Living:
N/A

**LIVING/
DINING** 13' 4" X 8' 8"
BEDROOM 8' 6" X 8' 8"

KING STREET WEST

COURTYARD

EAST MOUNTAIN KEYPLAN



All dimensions and specifications are approximate. Certain plans are reverse or mirror image. Balcony square footages are estimated and may vary from that stated. Please see Sales Representative for details. Furniture not included. Refer to key plan for unit location and orientation. E. & O.E.

KING

HOME 812 E



1BD.14

1 Bedroom
1 Bathroom

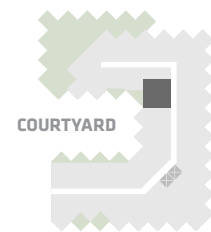
Total Living:
624 ft²

Interior Living:
549 ft²

Exterior Living:
75 ft²

LIVING	12' 0" X 9' 2"
DINING	8' 0" X 9' 0"
BEDROOM	12' 2" X 9' 10"
BALCONY	13' 0" X 7' 9"

KING STREET WEST



COURTYARD

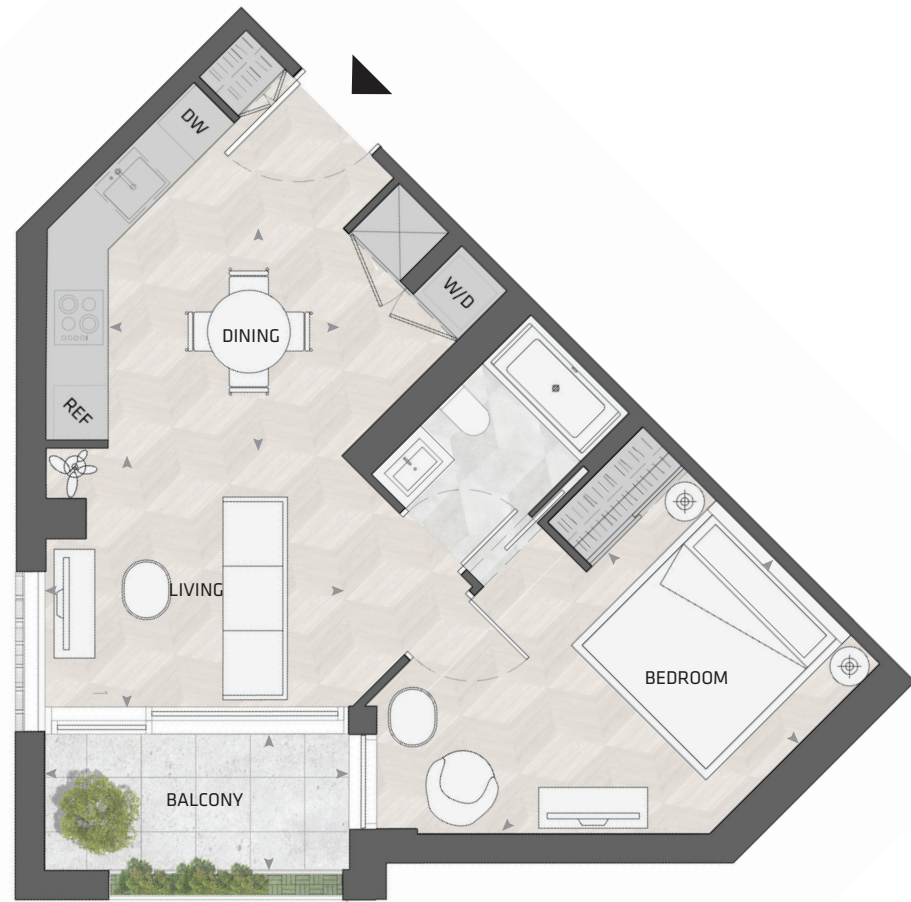
EAST MOUNTAIN KEYPLAN



All dimensions and specifications are approximate. Certain plans are reverse or mirror image. Balcony square footages are estimated and may vary from that stated. Please see Sales Representative for details. Furniture not included. Refer to key plan for unit location and orientation. E. & O.E.

KING

HOME 819 E



1BD.10C

**1 Bedroom
1 Bathroom**

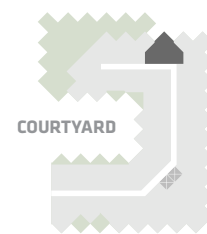
**Total Living:
669 ft²**

Interior Living:
597 ft²

Exterior Living:
72 ft²

LIVING	11' 7" X 8' 10"
DINING	8' 6" X 7' 10"
BEDROOM	9' 10" X 11' 9"
BALCONY	11' 0" X 4' 11"

KING STREET WEST



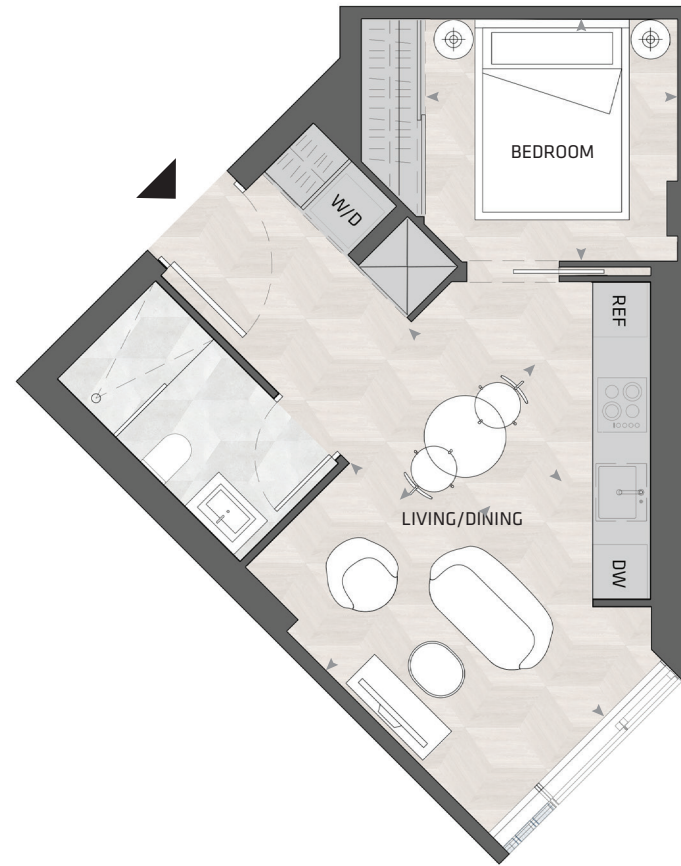
EAST MOUNTAIN KEYPLAN



All dimensions and specifications are approximate. Certain plans are reverse or mirror image. Balcony square footages are estimated and may vary from that stated. Please see Sales Representative for details. Furniture not included. Refer to key plan for unit location and orientation. E. & O.E.

KING

HOME 908 E



1BD.78

1 Bedroom
1 Bathroom

Total Living:
495 ft²

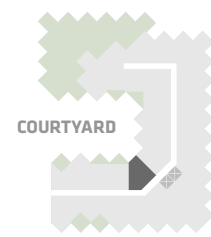
Interior Living:
495 ft²

Exterior Living:
N/A

LIVING	8' 2" X 13' 0"
DINING	7' 6" X 8' 7"
BEDROOM	9' 1" X 8' 8"

KING STREET WEST

COURTYARD



EAST MOUNTAIN KEYPLAN



All dimensions and specifications are approximate. Certain plans are reverse or mirror image. Balcony square footages are estimated and may vary from that stated. Please see Sales Representative for details. Furniture not included. Refer to key plan for unit location and orientation. E. & O.E.

KING

HOME 912 E



1BD.14

1 Bedroom
1 Bathroom

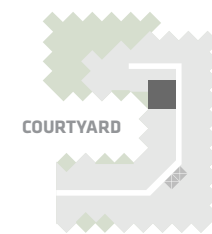
Total Living:
628 ft²

Interior Living:
554 ft²

Exterior Living:
75 ft²

LIVING	12' 0" X 9' 2"
DINING	8' 0" X 9' 0"
BEDROOM	12' 2" X 9' 10"
BALCONY	13' 0" X 7' 9"

KING STREET WEST



EAST MOUNTAIN KEYPLAN



All dimensions and specifications are approximate. Certain plans are reverse or mirror image. Balcony square footages are estimated and may vary from that stated. Please see Sales Representative for details. Furniture not included. Refer to key plan for unit location and orientation. E. & O.E.

KING

HOME 1606 E



1BD.84

1 Bedroom
1 Bathroom

Total Living:
503 ft²

Interior Living:
503 ft²

Exterior Living:
N/A

**LIVING/
DINING** 13' 4" X 8' 8"
BEDROOM 8' 6" X 8' 8"

KING STREET WEST

COURTYARD

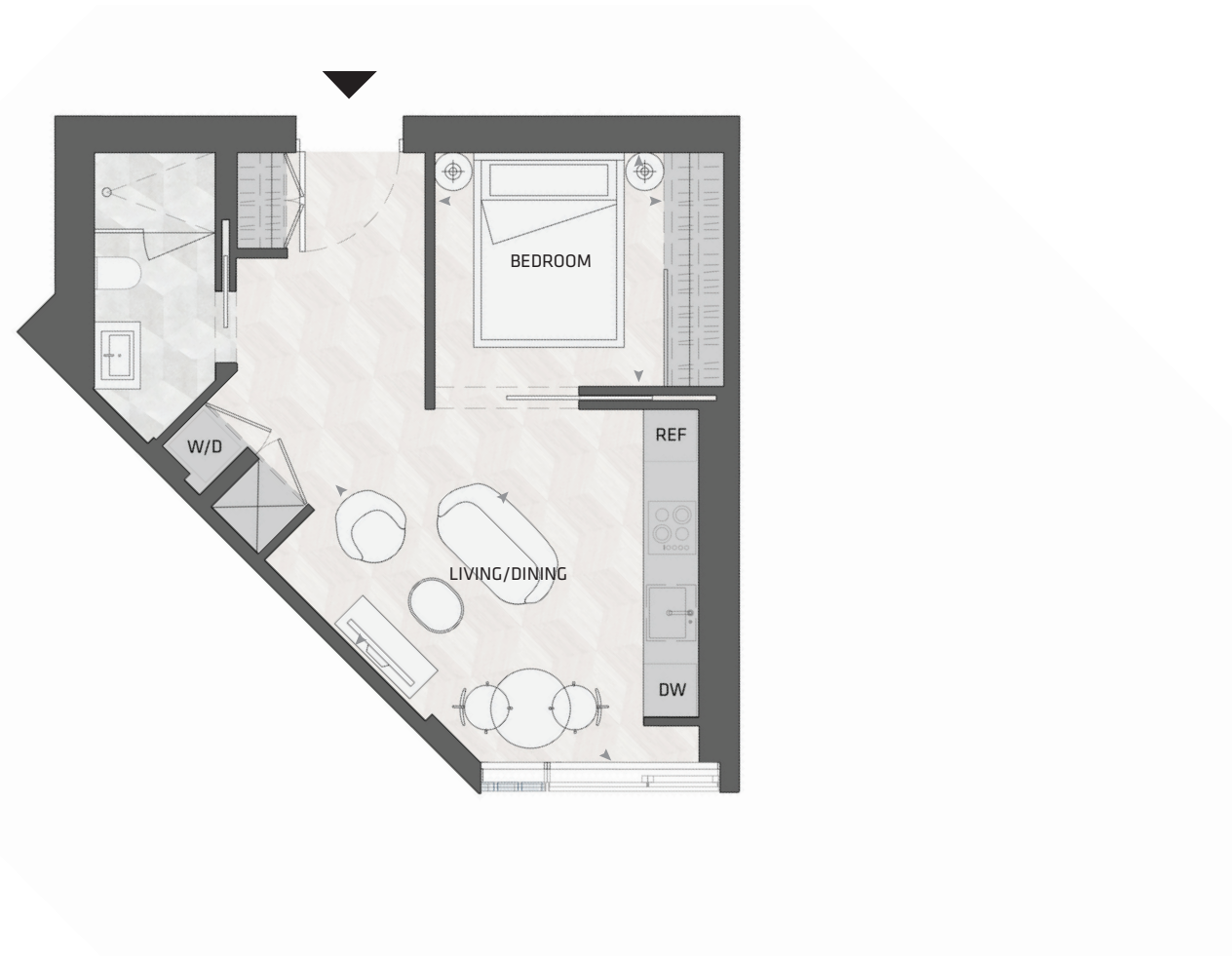
EAST MOUNTAIN KEYPLAN



All dimensions and specifications are approximate. Certain plans are reverse or mirror image. Balcony square footages are estimated and may vary from that stated. Please see Sales Representative for details. Furniture not included. Refer to key plan for unit location and orientation. E. & O.E.

KING

HOME 909 E



1BD.84

1 Bedroom
1 Bathroom

Total Living:
503 ft²

Interior Living:
503 ft²

Exterior Living:
N/A

**LIVING/
DINING** 13' 4" X 8' 8"
BEDROOM 8' 6" X 8' 8"

KING STREET WEST

COURTYARD

EAST MOUNTAIN KEYPLAN



All dimensions and specifications are approximate. Certain plans are reverse or mirror image. Balcony square footages are estimated and may vary from that stated. Please see Sales Representative for details. Furniture not included. Refer to key plan for unit location and orientation. E. & O.E.

KING

HOME 1506 E



1BD.84

1 Bedroom
1 Bathroom

Total Living:
503 ft²

Interior Living:
503 ft²

Exterior Living:
N/A

**LIVING/
DINING** 13' 4" X 8' 8"
BEDROOM 8' 6" X 8' 8"

KING STREET WEST

COURTYARD

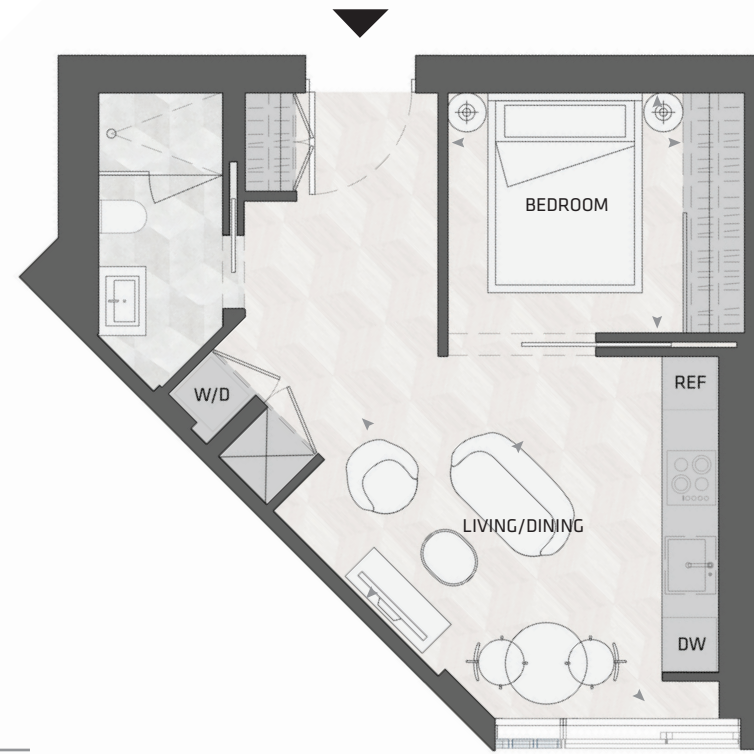
EAST MOUNTAIN KEYPLAN



All dimensions and specifications are approximate. Certain plans are reverse or mirror image. Balcony square footages are estimated and may vary from that stated. Please see Sales Representative for details. Furniture not included. Refer to key plan for unit location and orientation. E. & O.E.

KING

HOME 1207 E



1BD.84

1 Bedroom
1 Bathroom

Total Living:
503 ft²

Interior Living:
503 ft²

Exterior Living:
N/A

**LIVING/
DINING** 13' 4" X 8' 8"
BEDROOM 8' 6" X 8' 8"

KING STREET WEST

COURTYARD

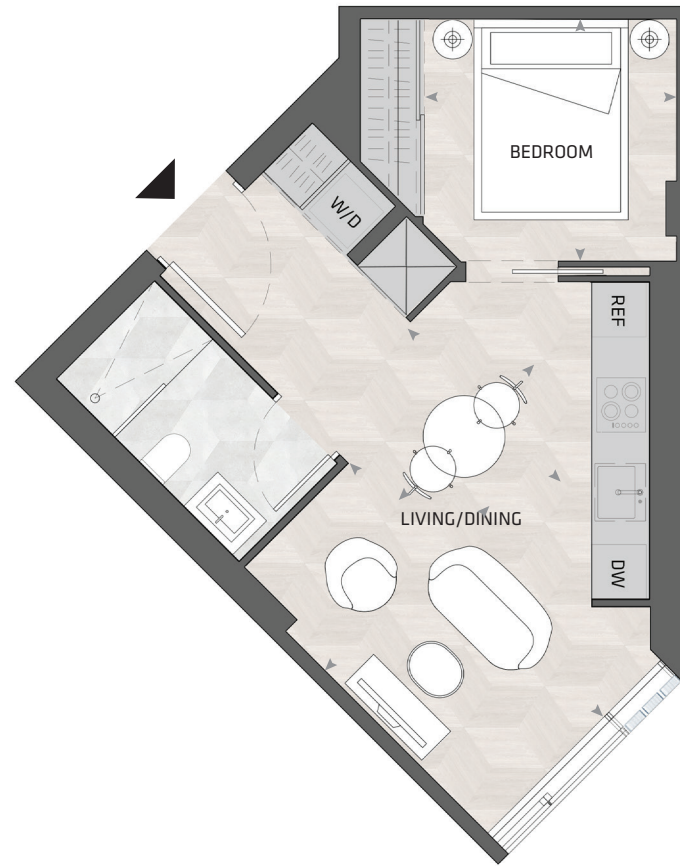
EAST MOUNTAIN KEYPLAN



All dimensions and specifications are approximate. Certain plans are reverse or mirror image. Balcony square footages are estimated and may vary from that stated. Please see Sales Representative for details. Furniture not included. Refer to key plan for unit location and orientation. E. & O.E.

KING

HOME 1206 E



1BD.78

1 Bedroom
1 Bathroom

Total Living:
495 ft²

Interior Living:
495 ft²

Exterior Living:
N/A

LIVING 8' 2" X 13' 0"
DINING 7' 6" X 8' 7"
BEDROOM 9' 1" X 8' 8"

KING STREET WEST

COURTYARD

EAST MOUNTAIN KEYPLAN



All dimensions and specifications are approximate. Certain plans are reverse or mirror image. Balcony square footages are estimated and may vary from that stated. Please see Sales Representative for details. Furniture not included. Refer to key plan for unit location and orientation. E. & O.E.

KING

HOME 1117 E



1BD.66

**1 Bedroom
1 Bathroom**

**Total Living:
883 ft²**

Interior Living:
596 ft²

Exterior Living:
287 ft²

LIVING	15' 6" X 9' 7"
DINING	9' 1" X 8' 2"
BEDROOM	9' 4" X 11' 10"
TERRACE	6' 8" X 9' 1"

KING STREET WEST

COURTYARD

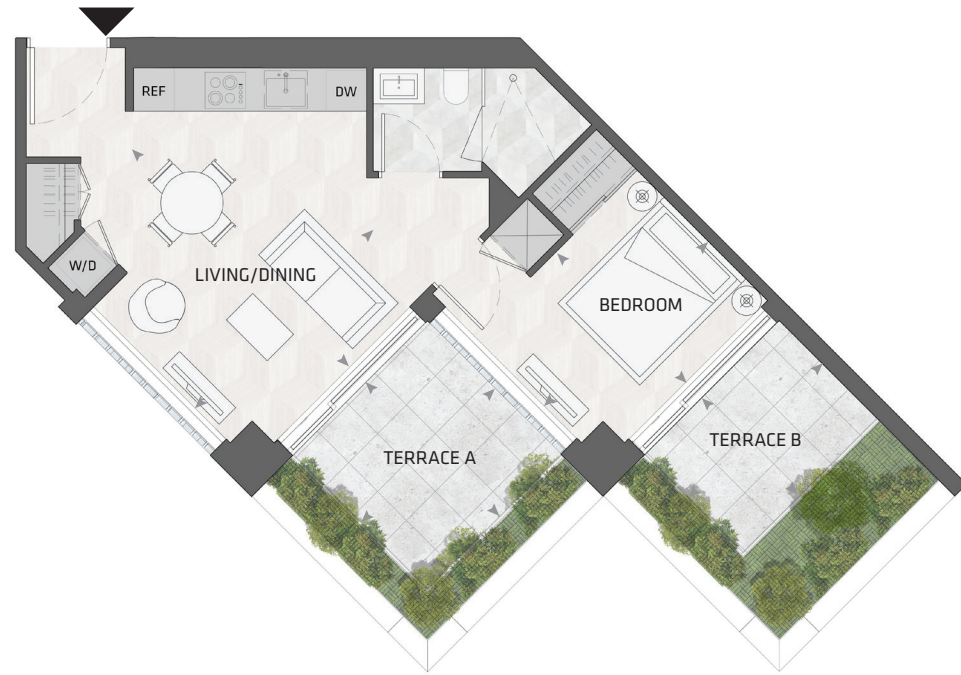
EAST MOUNTAIN KEYPLAN



All dimensions and specifications are approximate. Certain plans are reverse or mirror image. Balcony square footages are estimated and may vary from that stated. Please see Sales Representative for details. Furniture not included. Refer to key plan for unit location and orientation. E. & O.E.

KING

HOME 1116 E



1BD.65

1 Bedroom
1 Bathroom

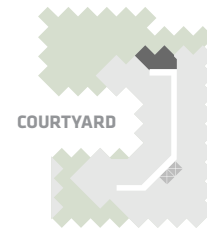
Total Living:
825 ft²

Interior Living:
539 ft²

Exterior Living:
287 ft²

LIVING/ DINING	16' 4" X 12' 0"
BEDROOM	11' 2" X 9' 1"
TERRACE A	9' 1" X 9' 1"
TERRACE B	9' 1" X 6' 8"

KING STREET WEST



EAST MOUNTAIN KEYPLAN



All dimensions and specifications are approximate. Certain plans are reverse or mirror image. Balcony square footages are estimated and may vary from that stated. Please see Sales Representative for details. Furniture not included. Refer to key plan for unit location and orientation. E. 6 O.E.

KING

HOME 1109 E



1BD.84

1 Bedroom
1 Bathroom

Total Living:
503 ft²

Interior Living:
503 ft²

Exterior Living:
N/A

**LIVING/
DINING** 13' 4" X 8' 8"
BEDROOM 8' 6" X 8' 8"

KING STREET WEST

COURTYARD

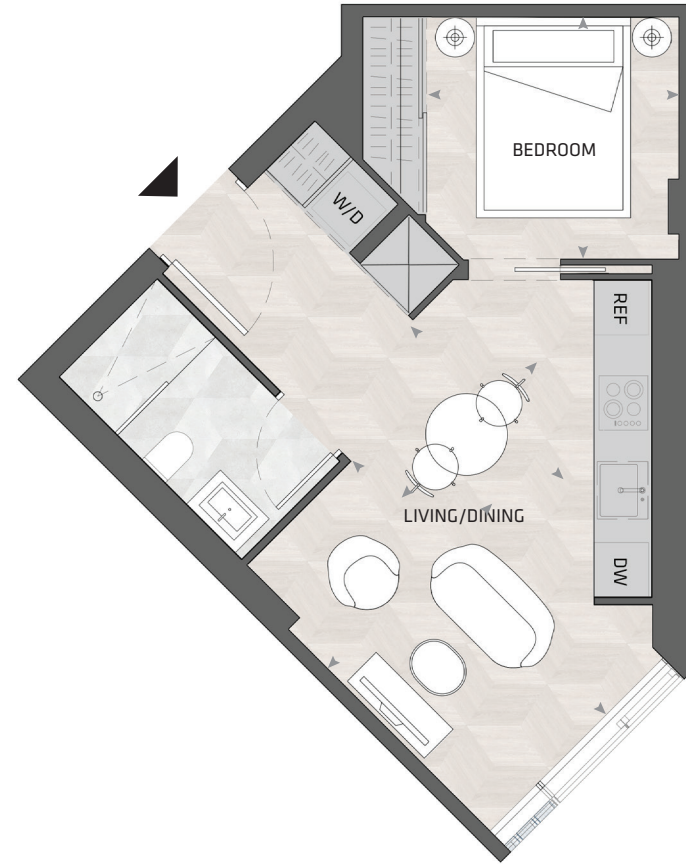
EAST MOUNTAIN KEYPLAN



All dimensions and specifications are approximate. Certain plans are reverse or mirror image. Balcony square footages are estimated and may vary from that stated. Please see Sales Representative for details. Furniture not included. Refer to key plan for unit location and orientation. E. & O.E.

KING

HOME 1108 E



1BD.78

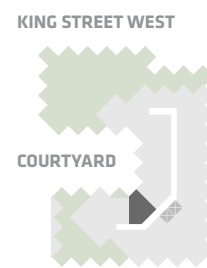
1 Bedroom
1 Bathroom

Total Living:
496 ft²

Interior Living:
496 ft²

Exterior Living:
N/A

LIVING	8' 2" X 13' 0"
DINING	7' 6" X 8' 7"
BEDROOM	9' 1" X 8' 8"



EAST MOUNTAIN KEYPLAN



All dimensions and specifications are approximate. Certain plans are reverse or mirror image. Balcony square footages are estimated and may vary from that stated. Please see Sales Representative for details. Furniture not included. Refer to key plan for unit location and orientation. E. & O.E.

KING

HOME 920 E



1BD.88

1 Bedroom
1 Bathroom

Total Living:
492 ft²

Interior Living:
492 ft²

Exterior Living:
N/A

**LIVING/
DINING** 16' 6" X 8' 2"
BEDROOM 8' 6" X 8' 9"

KING STREET WEST

COURTYARD

EAST MOUNTAIN KEYPLAN



All dimensions and specifications are approximate. Certain plans are reverse or mirror image. Balcony square footages are estimated and may vary from that stated. Please see Sales Representative for details. Furniture not included. Refer to key plan for unit location and orientation. E. & O.E.

KING

HOME 1107 E



1BD.50

1 Bedroom
1 Bathroom

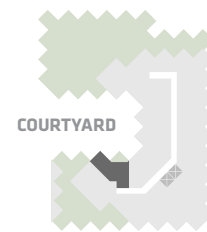
Total Living:
644 ft²

Interior Living:
556 ft²

Exterior Living:
88 ft²

LIVING	15' 0" X 7' 8"
DINING	6' 6" X 9' 11"
BEDROOM	11' 8" X 9' 10"
BALCONY	13' 0" X 7' 9"

KING STREET WEST



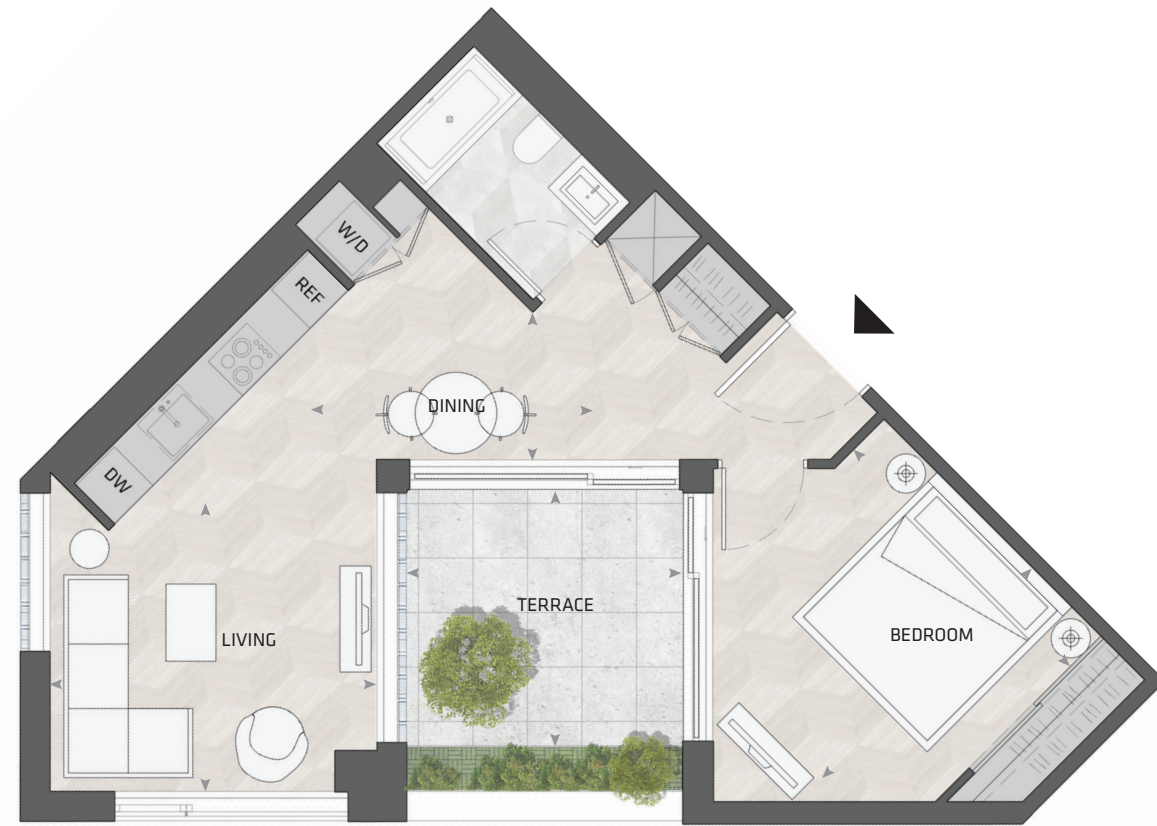
EAST MOUNTAIN KEYPLAN



All dimensions and specifications are approximate. Certain plans are reverse or mirror image. Balcony square footages are estimated and may vary from that stated. Please see Sales Representative for details. Furniture not included. Refer to key plan for unit location and orientation. E. & O.E.

KING

HOME 1006 E



1BD.47

1 Bedroom
1 Bathroom

Total Living:
748 ft²

Interior Living:
628 ft²

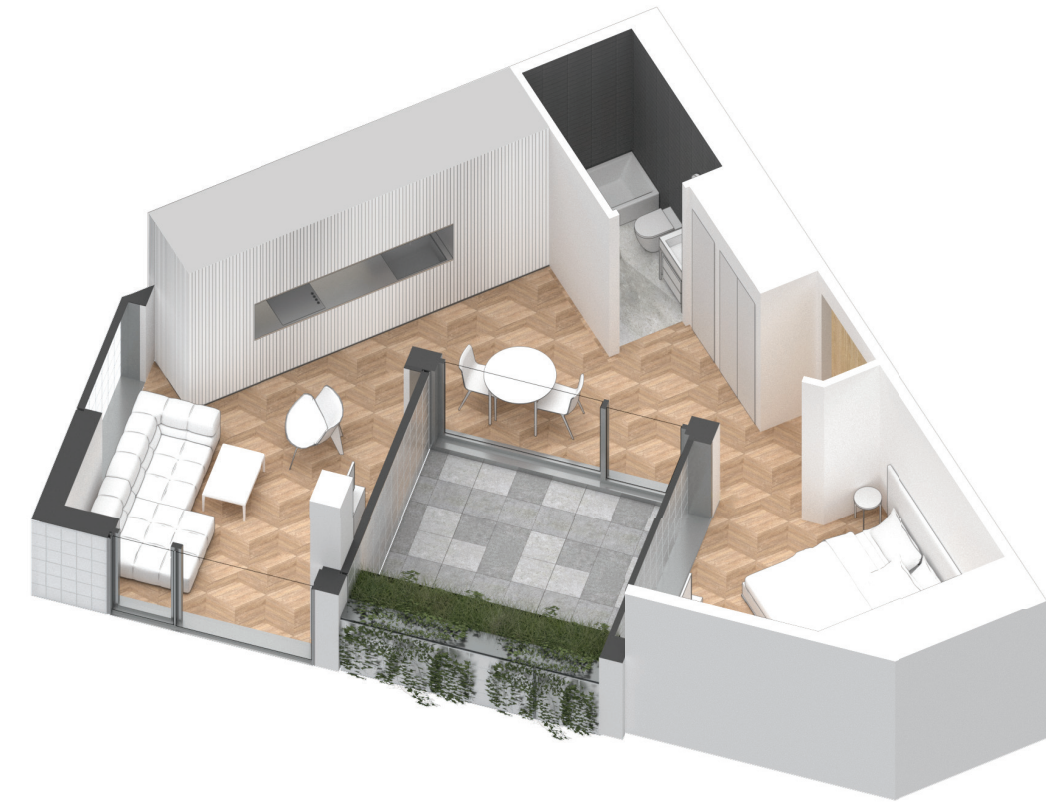
Exterior Living:
120 ft²

LIVING	11' 1" X 10' 11"
DINING	12' 0" X 5' 4"
BEDROOM	11' 1" X 8' 11"
TERRACE	10' 0" X 9' 1"

KING STREET WEST

COURTYARD

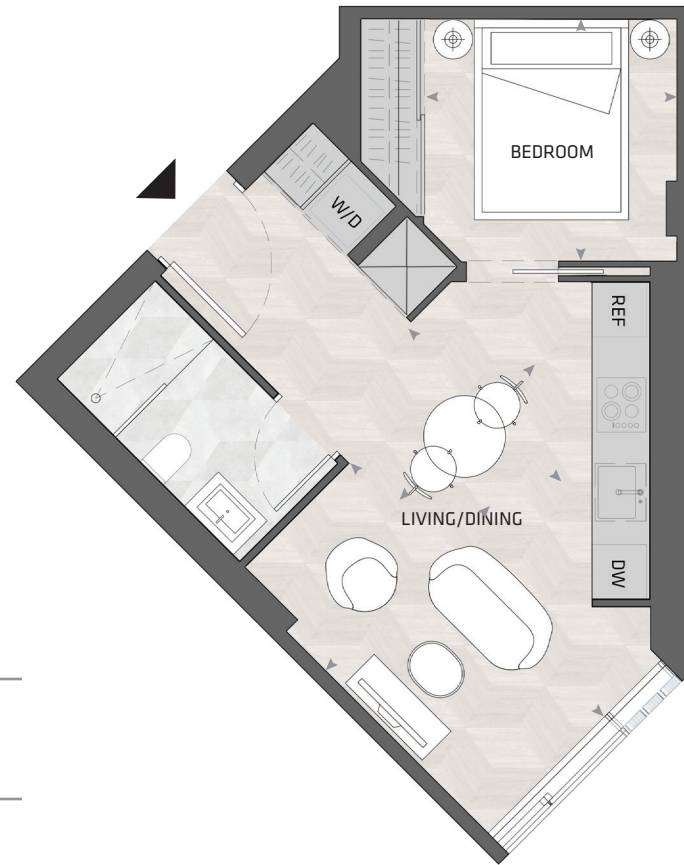
EAST MOUNTAIN KEYPLAN



All dimensions and specifications are approximate. Certain plans are reverse or mirror image. Balcony square footages are estimated and may vary from that stated. Please see Sales Representative for details. Furniture not included. Refer to key plan for unit location and orientation. E. & O.E.

KING

HOME 1008 E



1BD.78

1 Bedroom
1 Bathroom

Total Living:
495 ft²

Interior Living:
495 ft²

Exterior Living:
N/A

LIVING	8' 2" X 13' 0"
DINING	7' 6" X 8' 7"
BEDROOM	9' 1" X 8' 8"

KING STREET WEST

COURTYARD

EAST MOUNTAIN KEYPLAN



All dimensions and specifications are approximate. Certain plans are reverse or mirror image. Balcony square footages are estimated and may vary from that stated. Please see Sales Representative for details. Furniture not included. Refer to key plan for unit location and orientation. E. & O.E.

KING

HOME 1009 E



1BD.84

1 Bedroom
1 Bathroom

Total Living:
503 ft²

Interior Living:
503 ft²

Exterior Living:
N/A

**LIVING/
DINING** 13' 4" X 8' 8"
BEDROOM 8' 6" X 8' 8"

KING STREET WEST

COURTYARD

EAST MOUNTAIN KEYPLAN



All dimensions and specifications are approximate. Certain plans are reverse or mirror image. Balcony square footages are estimated and may vary from that stated. Please see Sales Representative for details. Furniture not included. Refer to key plan for unit location and orientation. E. & O.E.

KING

HOME 1017 E



1BD.43

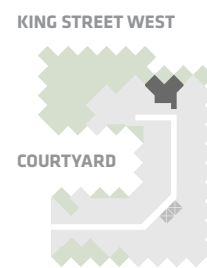
1 Bedroom
1 Bathroom

Total Living:
843 ft²

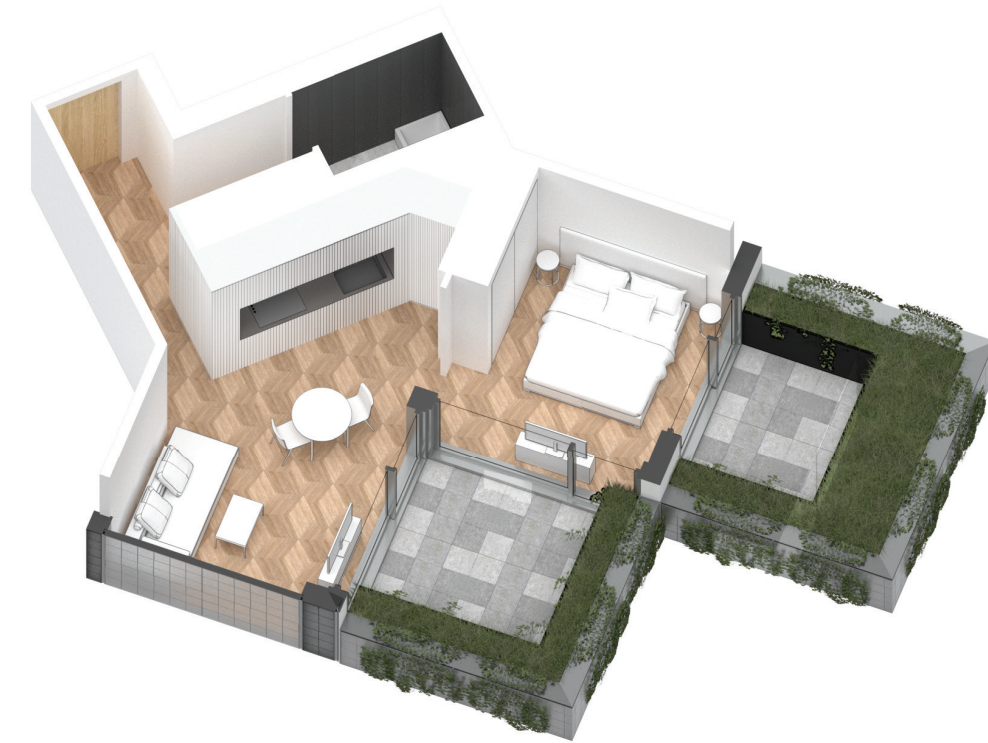
Interior Living:
556 ft²

Exterior Living:
287 ft²

LIVING/ DINING	16' 3" X 11' 2"
BEDROOM	11' 2" X 9' 10"
TERRACE	9' 1" X 9' 1"



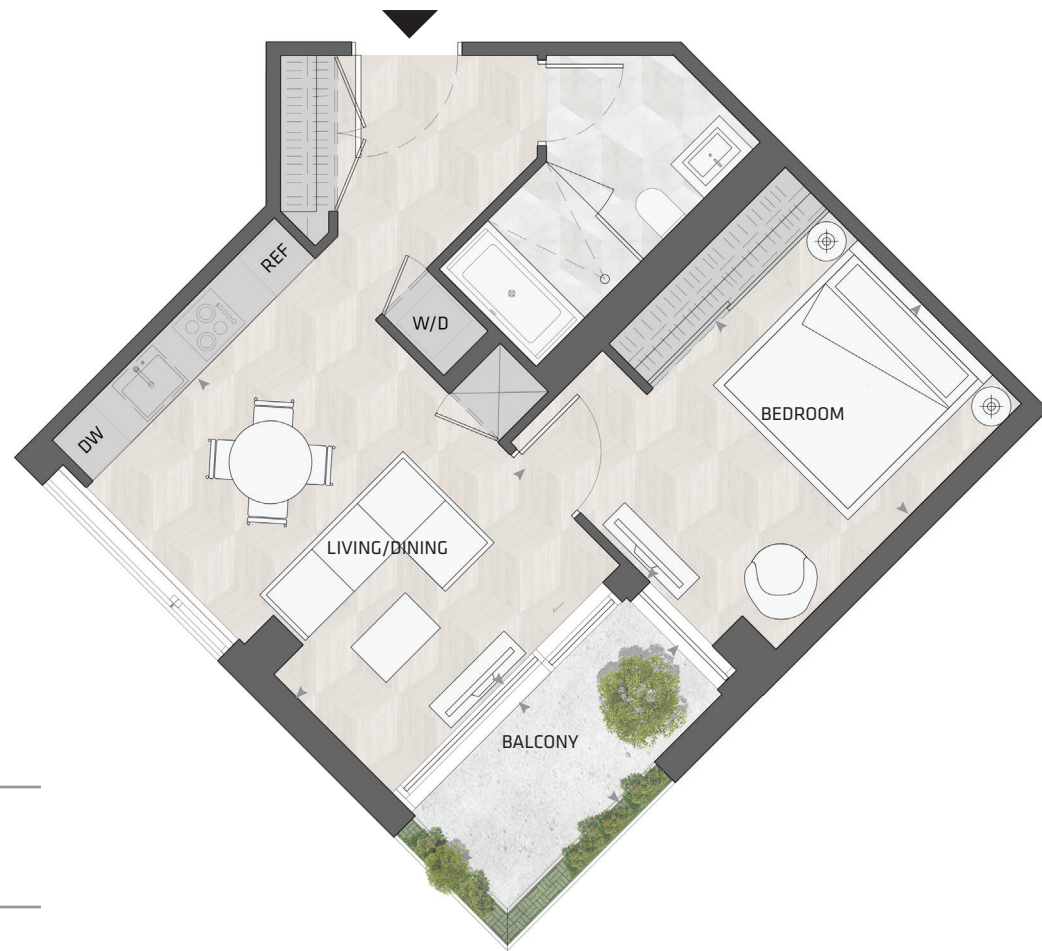
EAST MOUNTAIN KEYPLAN



All dimensions and specifications are approximate. Certain plans are reverse or mirror image. Balcony square footages are estimated and may vary from that stated. Please see Sales Representative for details. Furniture not included. Refer to key plan for unit location and orientation. E. 6 O.E.

KING

HOME 1103 E



1BD.49

1 Bedroom
1 Bathroom

Total Living:
675 ft²

Interior Living:
603 ft²

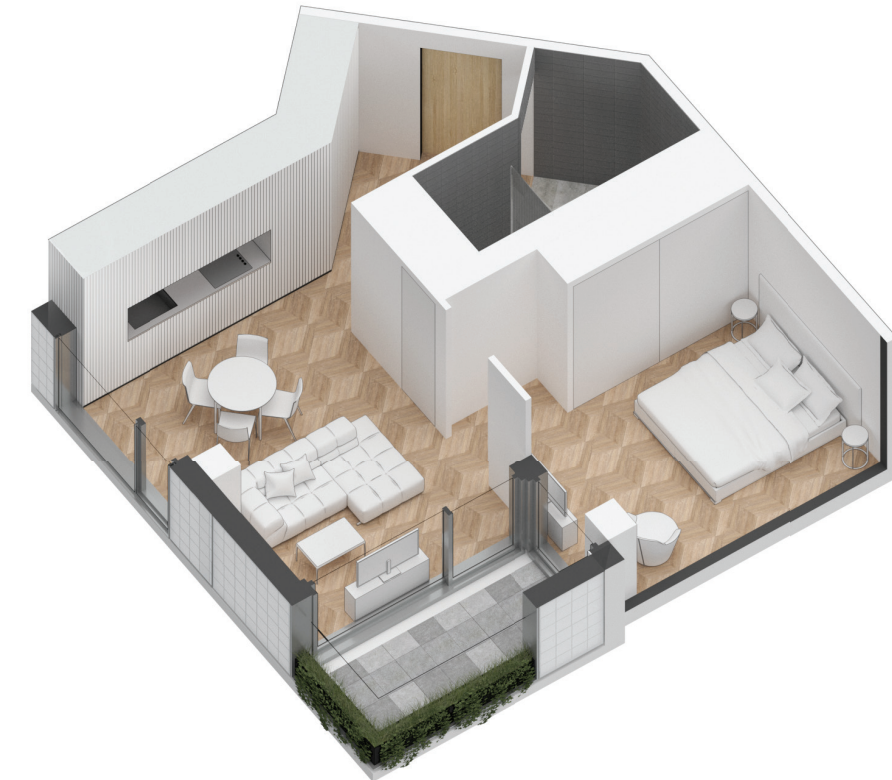
Exterior Living:
72 ft²

LIVING/ DINING	11' 8" X 15' 7"
BEDROOM	14' 1" X 9' 10"
BALCONY	11' 0" X 4' 11"

KING STREET WEST

COURTYARD

EAST MOUNTAIN KEYPLAN



All dimensions and specifications are approximate. Certain plans are reverse or mirror image. Balcony square footages are estimated and may vary from that stated. Please see Sales Representative for details. Furniture not included. Refer to key plan for unit location and orientation. E. & O.E.

KING

HOME 1105 E



1BD.52

1 Bedroom
1 Bathroom

Total Living:
692 ft²

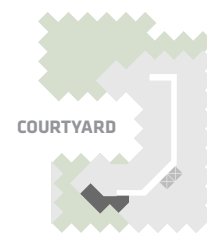
Interior Living:
549 ft²

Exterior Living:
143 ft²

LIVING	10' 10" X 11' 1"
DINING	12' 0" X 6' 2"
BEDROOM	9' 0" X 8' 9"
TERRACE	9' 1" X 9' 1"

KING STREET WEST

COURTYARD



EAST MOUNTAIN KEYPLAN



All dimensions and specifications are approximate. Certain plans are reverse or mirror image. Balcony square footages are estimated and may vary from that stated. Please see Sales Representative for details. Furniture not included. Refer to key plan for unit location and orientation. E. & O.E.